


**vtech**<sup>®</sup>

User's Manual

# Musical Bubbles Octopus™



© 2010 VTech  
Printed in China  
91-002470-007 

*Dear Parent,*

*Ever notice the look on your baby's face when they learn something new through their own discovery? These self-accomplished moments are a parent's greatest reward. To help fulfill them, VTech® created the **Infant Learning**® series of toys.*

*These unique interactive learning toys directly respond to what children do naturally – play! Using innovative technology, these toys react to baby's interactions, making each play experience fun and unique as they learn age-appropriate concepts like first words, numbers, shapes, colors and music. More importantly, VTech®'s **Infant Learning**® toys develop baby's mental and physical abilities by inspiring, engaging and teaching.*

*At VTech®, we know that a child has the ability to do great things. That's why all of our electronic learning products are uniquely designed to develop a child's mind and allow them to learn to the best of their ability. We thank you for trusting VTech® with the important job of helping your child learn and grow!*

*Sincerely,*

*Your friends at VTech®*

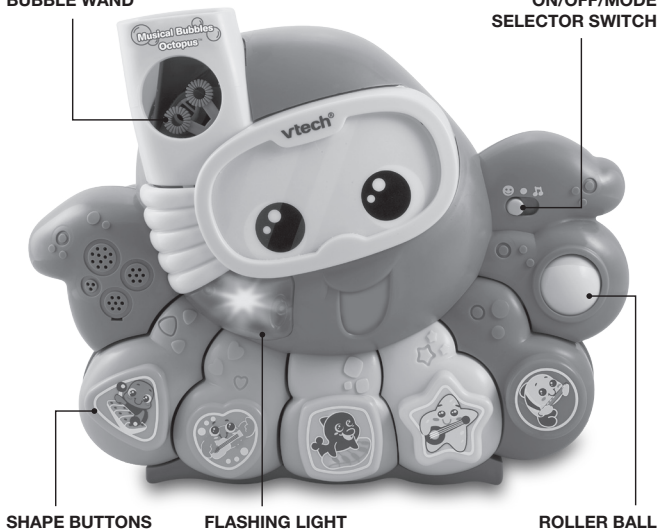
*To learn more about the **Infant Learning**® series and other VTech® toys, visit [www.vtechkids.com](http://www.vtechkids.com)*

# INTRODUCTION

Thank you for purchasing the **VTech® Musical Bubbles Octopus™**. The **VTech® Musical Bubbles Octopus™** is an interactive bath toy for toddlers. Press the shape buttons to interact with the sea animals and learn about the instruments they are playing, shapes, fun characteristics and sounds. The octopus really comes to life when you turn on the bubbles! A gentle stream of bubbles will cascade into the tub while the fun phrases, sounds and music is playing. Bubbles dancing, bubbles floating, bubble fun!

## BUBBLE WAND

## ON/OFF/MODE SELECTOR SWITCH



## SHAPE BUTTONS

## FLASHING LIGHT

## ROLLER BALL

Please read **PRODUCT ASSEMBLY / INSTALLATION INSTRUCTIONS** before use

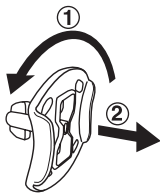
# INCLUDED IN THIS PACKAGE

- One VTech® Musical Bubbles Octopus™
- One user's manual

**WARNING:** All packing materials, such as tape, plastic sheets, wire ties and tags are not part of this toy, and should be discarded for your child's safety.

**NOTE:** Please keep instruction manual as it contains important information.

## Unlocking the Packaging Locks:

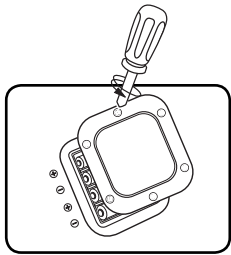


- ① Rotate the packaging locks 90 degrees counter-clockwise.
- ② Pull out the packaging locks.

# GETTING STARTED

## BATTERY INSTALLATION

1. Make sure the unit is turned **OFF** and the battery cover, battery box and unit are all dry.
2. Locate the battery cover on the back of the unit. Use a screwdriver to loosen the screws.



3. Install 4 new 'AA' (AM-3/LR6) batteries following the diagram inside the battery box. (The use of new alkaline batteries is recommended for maximum performance.)
4. When closing the battery cover ensure that the screws are securely tightened. This will avoid any water leakage.

## **BATTERY NOTICE**

- The use of new alkaline batteries is recommended for maximum performance.
- Non-rechargeable batteries are not to be recharged.
- Rechargeable batteries are to be removed from the toy before being charged (if removable).
- Rechargeable batteries are only to be charged under adult supervision (if removable).
- Do not mix old and new batteries.
- Do not mix batteries of different types: alkaline, standard (carbon-zinc) or rechargeable (nickel-cadmium).
- Only batteries of the same or equivalent type as recommended are to be used.
- Batteries are to be inserted with the correct polarity.
- Exhausted batteries are to be removed from the toy.
- The supply terminals are not to be short-circuited.
- The toy is not to be connected to more than the recommended number of power supplies.
- Do not dispose of batteries in fire.

# PRODUCT ASSEMBLY/ INSTALLATION INSTRUCTIONS

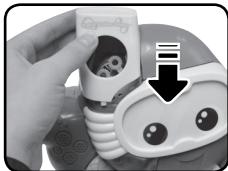
1. Press the release button and remove the snorkel lid to expose the bubble reservoir.



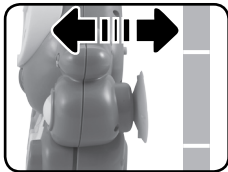
2. Carefully fill the bubble reservoir with bubble solution. Do not overfill as this may cause the bubble solution to spill. Do not dilute the bubble solution, using concentrated bubble solution will produce the best bubbles.



3. Return the snorkel lid and snap it back into position.



4. Choose a surface on the wall surrounding the tub where the **VTech® Musical Bubbles Octopus™** can be mounted securely. The area should be clean and dry before suctioning the unit to the wall. For better suction, we suggest wetting the suction cups before attaching to the wall. Once the unit is attached to the wall, test the strength of the suction by pulling gently on the unit. The suction cups may not stick properly to textured tiles. We recommend that the unit be removed from the wall after each use as the strength of the suction cups cannot support prolonged use.



- To remove the unit from the wall, pull on the tabs on the back of the suction cups.

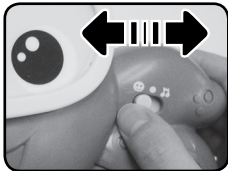
**WARNING:** To prevent the risk of injuries, do not attach the VTech® Musical Bubbles Octopus™ any higher than a child's head height when sitting in the bath.



## PRODUCT FEATURES

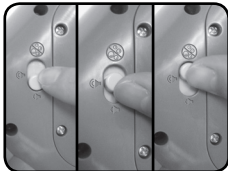
- ON/OFF/MODE SELECTOR SWITCH**

Slide the **ON/OFF/MODE SELECTOR SWITCH** to turn the unit on and select a mode of play.



- VOLUME/MOTOR CONTROL SWITCH**

Slide the **VOLUME/MOTOR CONTROL SWITCH** to the **LOW VOLUME** (🔊) or **HIGH VOLUME** (🔊) position. To turn off the bubble motor, slide the **VOLUME/MOTOR CONTROL SWITCH** to the **MOTOR OFF** (🚫) position.



- AUTOMATIC SHUT-OFF**

To preserve battery life, the VTech® Musical Bubbles Octopus™ will automatically power-down after approximately 90 seconds without input in the learning mode. The unit will automatically power-down after approximately 12 minutes in the long play music mode position. The unit can be turned on again by pressing any button.

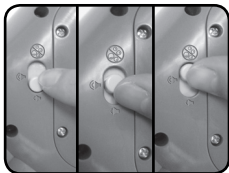
## **WARNING:**

- Batteries must be changed by an adult.
- We do not recommend submerging the unit in the water. If the unit does get submerged in the water, please dry the unit completely before adding the bubble solution.
- To prevent drowning, never leave a child unattended in the bath.
- Use a thermometer to check the temperature of the water before sitting a child in the bath. Toddlers have very sensitive skin and can burn easily if the water is too hot.
- For best results, use only high quality bubble solution.
- Do not drink the bubble solution.
- In case of eye contact, immediately rinse the eye with clean water.
- Please check the suction cups periodically as they may detach after prolonged use.
- Use caution when handling the unit when the reservoir is full of bubble solution, the bubble solution can spill easily.
- When the unit will not be used of an extended period of time, empty the bubble solution from the reservoir and wipe the unit clean with a damp cloth.
- Children should not play with the suction cups when the unit is fastened to the wall as the unit may detach and cause injuries.
- Do not clean the bubble wand with cleaning products. Cleaners may have a negative impact on the bubble effect.
- Do not touch the bubble wand when the bubble motor is turned on.

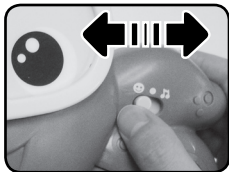


# ACTIVITIES

1. Slide the **volume/motor control switch** to the **low volume** (🔊) or **high volume** (🔊) position to turn the bubble motor on.



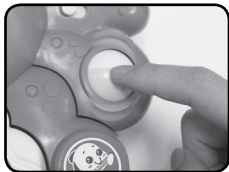
2. Slide the **on/off/mode selector switch** to the **learning mode** or the **music mode** position. You will hear a fun sung song, sounds and a playful phrase. The light will flash and the bubbles will blow with the sound.



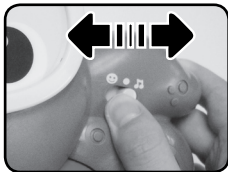
3. Press the **shape buttons** to learn shapes, animal names and sounds, animal characteristics, musical instruments and short tunes in the learning mode. In the music mode you will learn animal names, musical instruments and their sounds and melodies. The light will flash and the bubbles will blow with the sound.



4. Spin the **roller ball** to hear fun phrases, sounds, random melodies or a sung song depending on the selected mode. The light will flash and the bubbles will blow with the sound.



5. When the bubble motor is turned on, slide the **on/off/mode selector switch** to the music mode position. You will hear approximately 12 minutes of continuous music. You can interrupt the long play music mode by pressing one of the five shape buttons, spinning the roller ball or by turning off the bubble motor.



## MELODY LIST

1. Sailor's Hornpipe
2. Frère Jacques
3. London Bridge
4. Oh My Darling, Clementine
5. Way Down Upon the Swanee River
6. Blow the Man Down
7. Come, Friends, Who Plough the Sea
8. Water Music
9. Minuet in G

## SING-ALONG SONG LYRICS

### SONG 1(to the tune of "Twinkle, Twinkle Little Star")

Bubbles, bubbles in the air,  
Bubbles, bubbles everywhere!  
It's so fun to sing and play,  
With my bubbles every day!  
Bubbles, bubbles in the air,  
Bubbles, bubbles everywhere!

# CARE & MAINTENANCE

1. Remove the unit from the wall after each use.
2. Keep the unit clean by wiping it with a slightly damp cloth.
3. Keep the unit out of direct sunlight and away from any direct heat source.
4. To prevent a build up of residue in the bubble reservoir, rinse the bubble reservoir with warm water.
5. Make sure to dry all the elements of the unit before storing.
6. Remove the batteries when the unit is not in use for an extended period of time.
7. Do not drop the unit on hard surfaces.

# TROUBLESHOOTING

If for some reason the program/activity stops working or malfunctions, please follow these steps:

1. Please turn the unit **OFF**.
2. Interrupt the power supply by removing the batteries.
3. Let the unit stand for a few minutes, then replace the batteries.
4. Turn the unit **ON**. The unit should now be ready to play again.
5. If the product still does not work, replace with a new set of batteries.
6. If not blow bubbles, please try to replace the water bubbles.

If the problem persists, please call our Consumer Services Department at 1-800-521-2010 in the U.S. or 1-877-352-8697 in Canada, and a service representative will be happy to help you.

For information on this product's warranty, please call **VTech**® 1-800-521-2010 in the U.S., or 1-877-352-8697 in Canada.

**IMPORTANT NOTE:**

Creating and developing **Infant Learning** products is accompanied by a responsibility that we at **VTech®** take very seriously. We make every effort to ensure the accuracy of the information, which forms the value of our products. However, errors sometimes can occur. It is important for you to know that we stand behind our products and encourage you to call our Consumer Services Department at 1-800-521-2010 in the U.S., or 1-877-352-8697 in Canada, with any problems and/or suggestions that you might have. A service representative will be happy to help you.

**FCC Notice:**

This equipment has been tested and found to comply with the limits for a Class B digital device, pursuant to Part 15 of the FCC Rules. These limits are designed to provide reasonable protection against harmful interference in a residential installation. This equipment generates, uses and can radiate radio frequency energy and, if not installed and used in accordance with the instructions, may cause harmful interference to radio communications. However, there is no guarantee that interference will not occur in a particular installation. If this equipment does cause harmful interference to radio or television reception, which can be determined by turning the equipment off and on, the user is encouraged to try to correct the interference by one or more of the following measures:

- Reorient or relocate the receiving antenna
- Increase the separation between the equipment and receiver
- Connect the equipment into an outlet on a circuit different from that to which the receiver is connected
- Consult the dealer or an experienced radio/TV technician for help

**Caution:** Changes or modifications not expressly approved by the party responsible for compliance could void the user's authority to operate the equipment.

THIS DEVICE COMPLIES WITH PART 15 OF THE FCC RULES. OPERATION IS SUBJECT TO THE FOLLOWING TWO CONDITIONS: (1) THIS DEVICE MAY NOT CAUSE HARMFUL INTERFERENCE, AND (2) THIS DEVICE MUST ACCEPT ANY INTERFERENCE RECEIVED, INCLUDING INTERFERENCE THAT MAY CAUSE UNDESIRED OPERATION.

THIS CLASS B DIGITAL APPARATUS COMPLIES WITH CANADIAN ICES- 003.

CET APPAREIL NUMÉRIQUE DE LA CLASSE B EST CONFORME À LA NORME NMB-003 DU CANADA.

